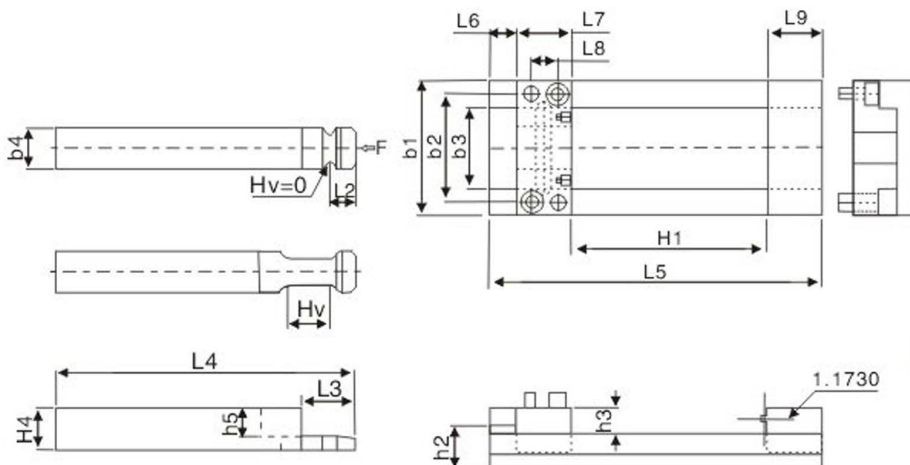


特點: 安裝加工簡單, 機械互鎖設計, 安全可靠, 連體式方型定位, 使產品更精準。

可根據模具荷重選擇對應產品, 在模闔上至少要2套并對稱使用。使用溫度範圍120°C。

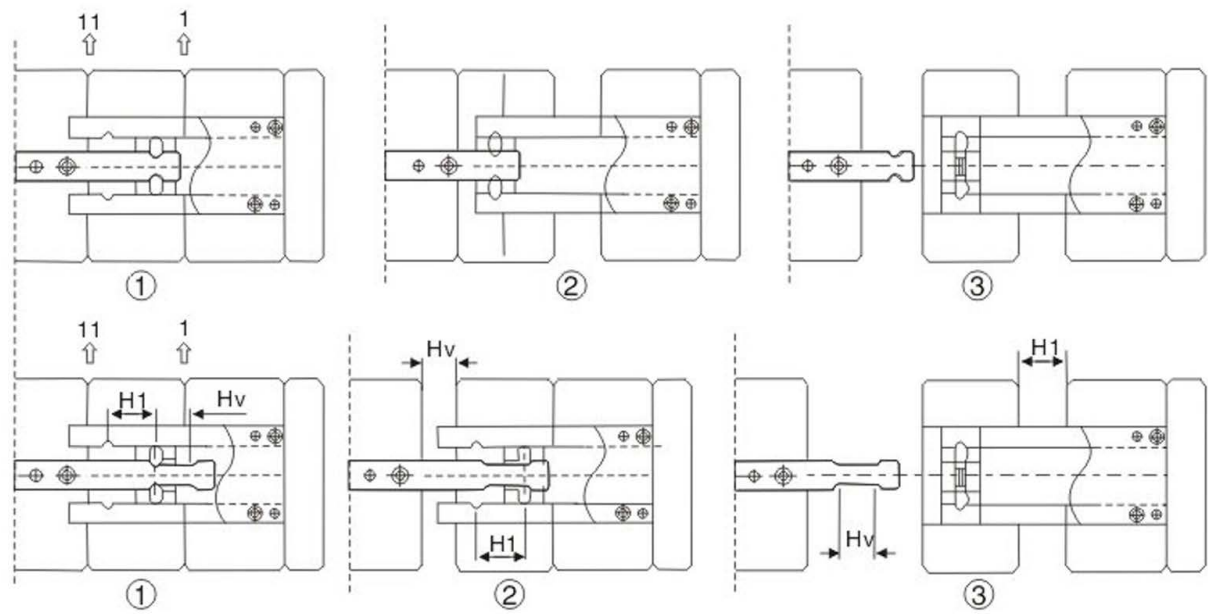
Characteristics: Installation and processing are simple. Design of mechanical interlock is safe and reliable. Connecting body and square positioning make product more accurate. People can select corresponding product according to die load. There shall be atleast 2 sets on template for symmetrical use. Operating temperature range is 120°C.



Type	b1	H1	Hv	L5	L4	L3	L2	h5	h4	h3	h2	h1	b4	b3	b2	L9	L8	L7	L6	安裝螺絲	定位鋪	F(N)
Z174/50	50	90	0	140	140	20	9.75	10	16	9.3	16	22.3	15	30.05	40	20	10	20	10	M4x12	6x20	16000
			20			40																
			0			20																
Z174/80	80	117	0	200	200	34	16.75	13	12.3	9.3	22	30.3	20	45.05	60	34	16	34	15	M6x16	6x20	27000
			32			66																
			0			34																
Z174/100	100	145	0	250	250	45	22.25	16	15.5	9.3	27	37.5	25	60.05	80	45	22	45	15	M8x18	8x24	48000
			50			95																
			0			45																

Order: Type No. x H1 x Hv x Pcs
 Z174/50 x 90 x 0 x 10

Example 使用例



2D下載

3D下載

返回索引