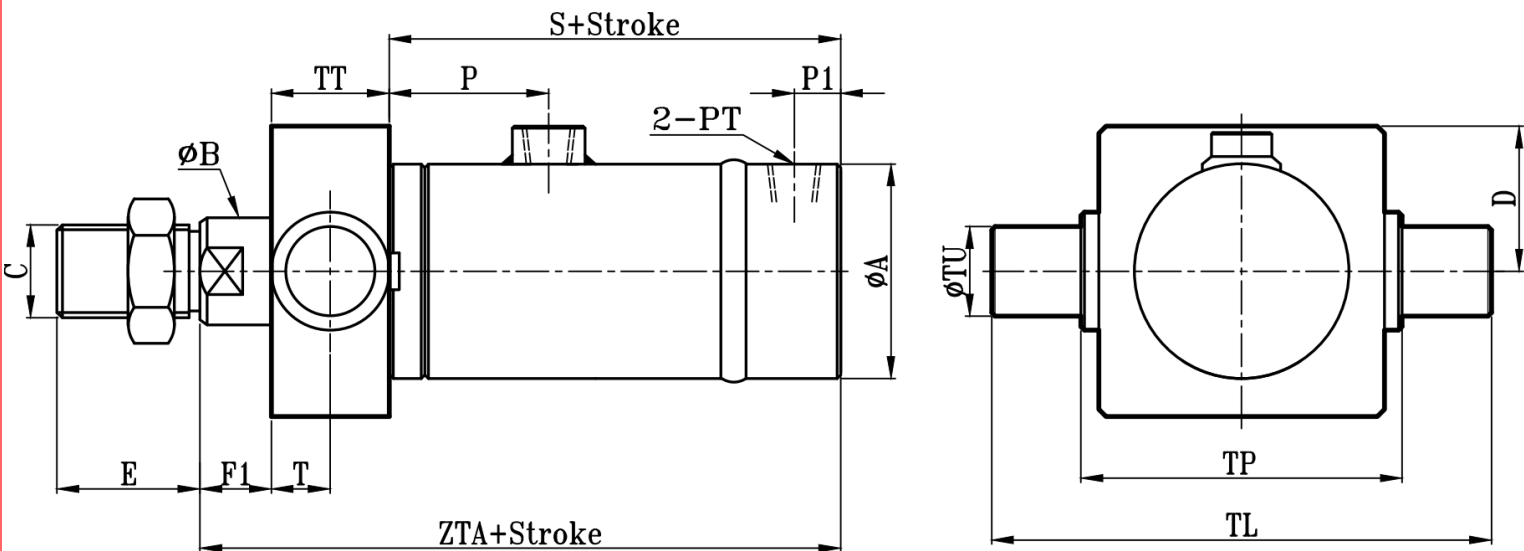
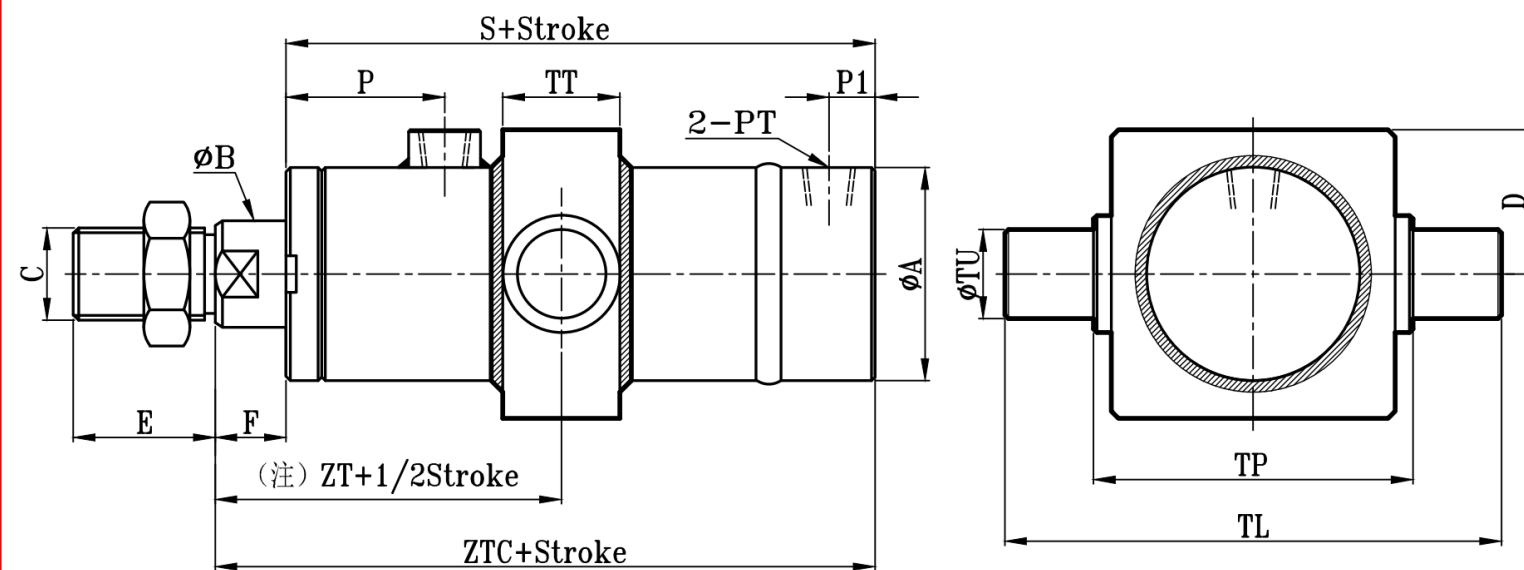


COB:COB+TA TYPE

工程圆型中型油压缸TA尺寸图 14Mpa CO Series TA,TC Dimensional Features



COB:COB+TC TYPE



缸径 BORE	COA TYPE														TA、TC TYPE				
	ΦA	ΦB	C	E	F	F1	P	P1	PT	S	T	ZT	ZTA	ZTC	ΦTU	TL	TP	TT	D
Φ40	50	25	M22xP1.5	30	15	18	40	13	3/8	104	11	67	144	119	22	115	77	22	32.5
Φ50	60	30	M26xP1.5	40	20	23	45	15	3/8	119	13.5	79.5	169	139	27	140	92	27	40
Φ63	73	35	M30xP1.5	40	20	18	50	15	3/8	124	16	82	174	144	32	160	102	32	45
Φ80	92	40	M30xP1.5	45	25	23	55	18	1/2	139	18.5	94.5	199	164	37	190	122	37	55
Φ100	114	50	M40xP2.0	50	25	16	60	18	1/2	159	22	104.5	219	184	44	233	155	44	65
Φ125	140	60	M50xP2.0	60	30	16	65	20	3/4	175	27	117.5	245	205	54	277	180	54	81
Φ140	160	70	M60xP2.0	70	30	16	70	20	3/4	180	27	120	250	210	54	300	200	54	95
Φ150	168	80	M70xP2.0	80	30	11	75	20	3/4	195	32	127.5	270	225	64	330	212	64	97.5
Φ160	178	80	M70xP2.0	80	30	11	80	20	3/4	195	32	127.5	270	225	64	340	222	64	102.5
Φ180	200	100	M90xP2.0	100	35	15	90	25	1	225	35	147.5	310	260	70	400	255	70	117.5
Φ200	228	100	M90xP2.0	100	35	15	95	25	1	225	35	147.5	310	260	70	425	277	70	130.5
Φ220	250	125	M100xP3.0	110	35	10	100	29	1 1/4	260	40	165	350	295	80	480	302	80	142.5
Φ250	276	125	M100xP3.0	110	35	10	105	29	1 1/4	260	40	165	350	295	80	510	332	80	157.5

注:ZT尺寸可按要求定做