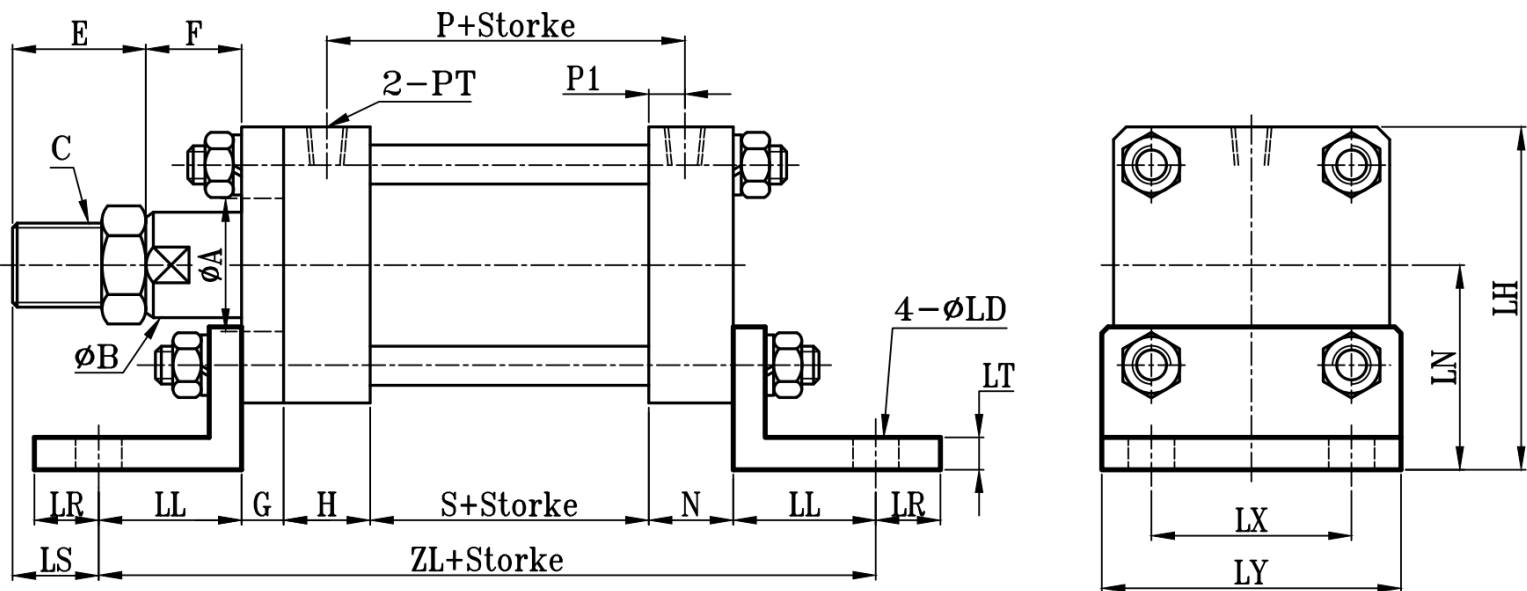
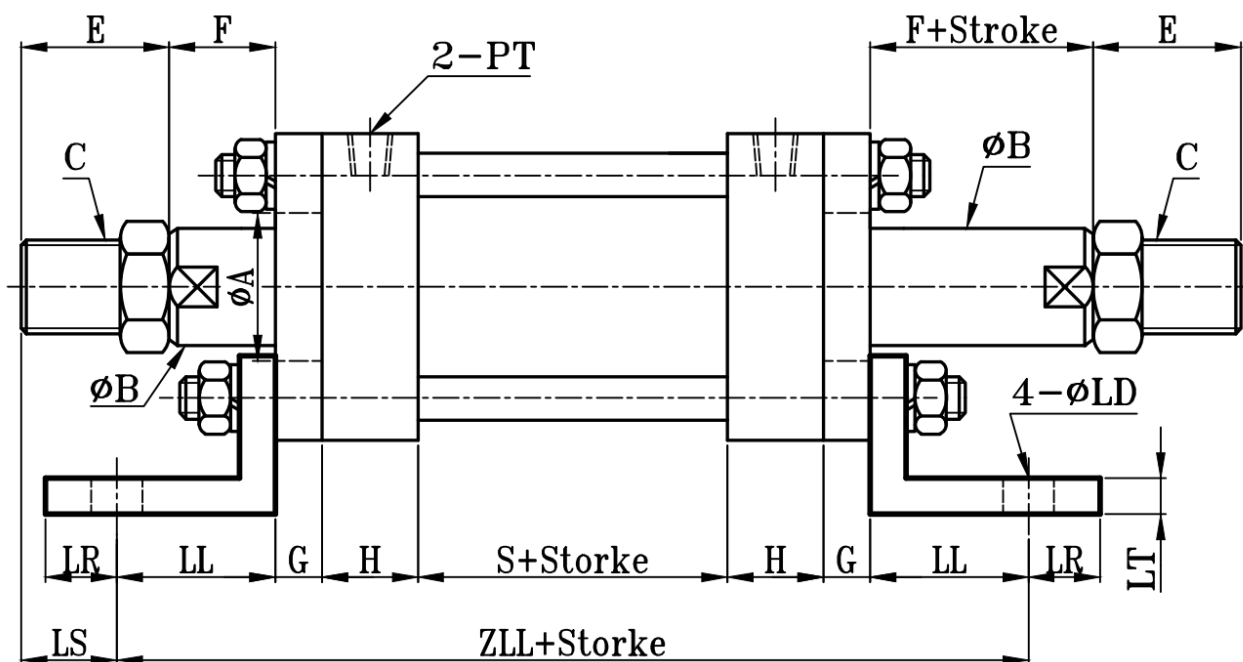


HOB:HOB+LB TYPE

方型重型油压缸LB架尺寸图 14Mpa Hydraulic Cylinders LB Dimensional Features



HOD:HOD+LB TYPE



缸径 BORE	HOB-HOD TYPE															LB TYPE									
	ΦA	ΦB	C	E	F	G	H	N	P	P1	PT	S	LS	ZL	ZLL	ΦLD	LH	LN	LL	LR	LT	LX	LY		
Φ32	31	18	M16xP1.5	30	15	14	28	25	71	10.5	1/4"	50	16	175	192	9	62	37	29	11	5	35	53		
Φ40	38	25	M22xP1.5	35	20	14	28	25	71	10.5	3/8"	50	18	191	208	12	77.5	45	37	13	6	45	68		
Φ50	44	30	M26xP1.5	40	20	16	33	28	80	12.5	3/8"	55	11	224	245	14	96	56	46	17	8	56	83		
Φ63	49	35	M30xP1.5	40	20	16	33	28	80	12.5	3/8"	55	14	224	245	16	106	61	46	17	8	62	93		
Φ80	54	40	M30xP1.5 M36xP1.5 可选	45	25	18	38	33	91	15.5	1/2"	60	11	267	290	18	129	74	59	21	10	80	113		
Φ100	64	50	M40xP2.0	50	25	20	38	33	111	15.5	1/2"	80	16	289	314	20	149	85	59	21	10	95	135		
Φ125	74	60	M50xP2.0	60	30	24	43	38	116	18	3/4"	80	15	335	364	24	184	104	75	25	12	122	167		
Φ150	97	80	M70xP2.0	80	30	29	48	43	130	20	3/4"	90	15	400	434	29	219.5	123	95	30	14	144	200		
Φ160	97	80	M70xP2.0	80	30	29	48	43	130	20	3/4"	90	15	400	434	29	229.5	128	95	30	14	152	210		
Φ180	117	100	M90xP2.0	100	35	34	58	48	146	23	1"	100	29	452	496	32	267.5	150	106	34	20	175	240		
Φ200	117	100	M90xP2.0	100	35	39	58	53	146	23	1"	100	22	476	520	35	298	169	113	37	24	193	265		
Φ220	150	125	M100xP3.0	110	35	44	68	58	166	28	1 1/4"	110	25	520	574	38	328.5	187	120	40	29	212	290		
Φ250	150	125	M100xP3.0	110	35	49	68	63	166	28	1 1/4"	110	10	560	614	41	369.5	212	135	45	34	236	320		