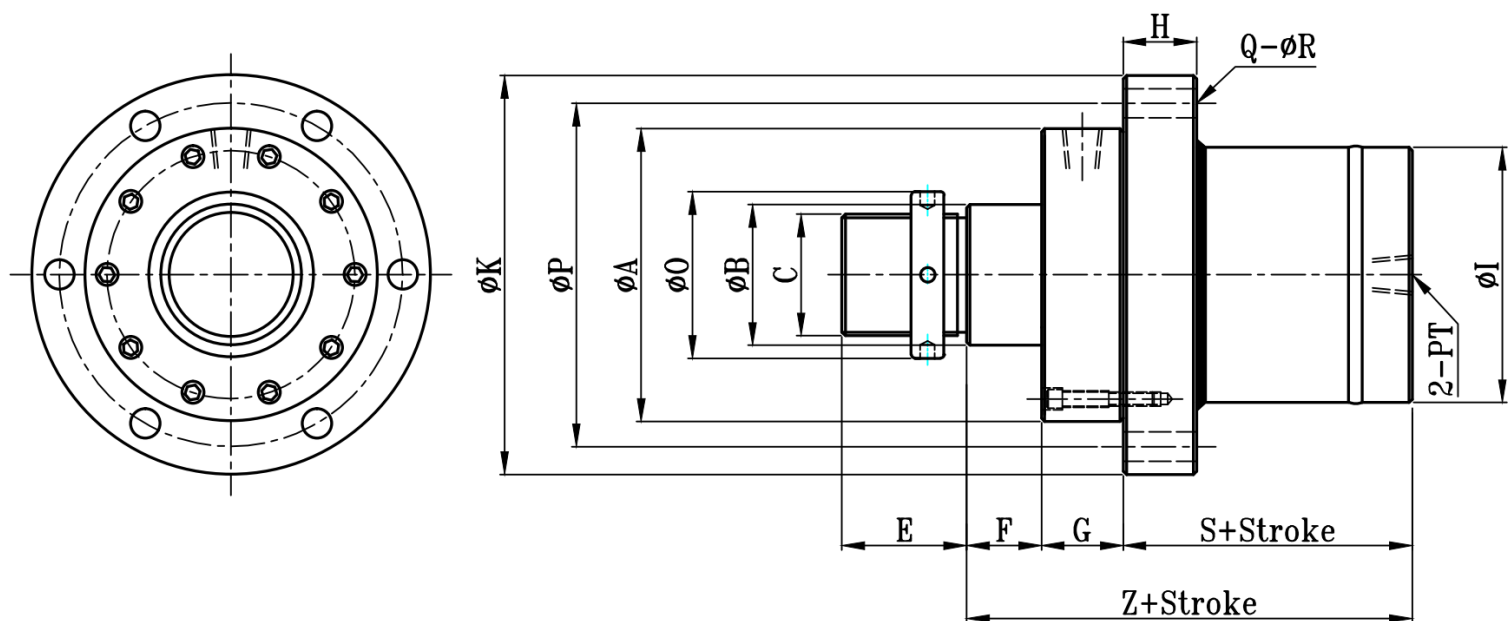
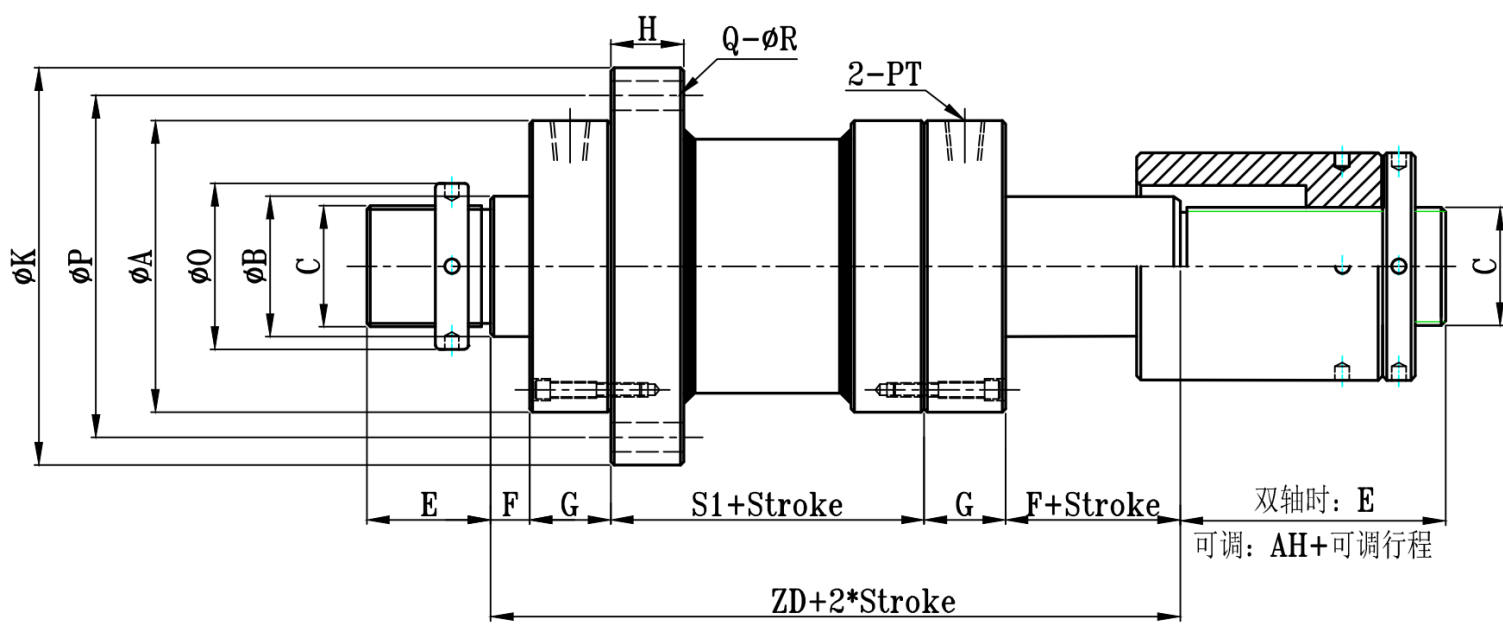


HROA:HROA+FA(前法兰板型) TYPE

大型高压圆油压缸尺寸图 21Mpa HRO Series Dimensional Features



HROD:HROAD+FA(双轴前法兰版型) TYPE



HROA-HROD-FA TYPE

缸径 BORE	$\phi A$	$\phi B$	C	H	$\phi I$	$\phi K$	$\phi P$	$\phi O$	E	F	G	S	S1	Z	ZD	AH	Q	$\phi R$	PT
$\Phi 125$	170	60	M50xP2.0	34	145	240	205	65	60	25	45	120	110	190	250	50	6	18	3/4
$\Phi 140$	190	70	M60xP2.0	39	165	270	230	80	70	25	50	125	115	200	265	60	6	20	3/4
$\Phi 150$	200	80	M70xP2.0	39	180	280	240	100	80	25	55	130	120	210	280	60	6	20	1
$\Phi 160$	210	80	M70xP2.0	39	190	290	250	100	80	30	55	140	130	225	300	60	6	20	1
$\Phi 180$	235	100	M90xP2.0	44	210	315	275	120	100	30	60	150	130	240	310	60	8	20	1 1/4
$\Phi 200$	260	120	M100xP3.0	49	235	340	300	130	110	30	65	160	140	255	330	65	8	22	1 1/4
$\Phi 220$	290	140	M120xP3.0	49	260	380	335	150	130	30	65	170	150	265	340	70	8	24	1 1/4
$\Phi 250$	325	160	M140xP3.0	54	299	430	380	180	150	30	70	180	160	280	360	75	8	26	1 1/4
$\Phi 280$	360	180	M160xP3.0	59	325	470	420	200	160	30	70	230	210	330	410	80	10	26	1 1/2
$\Phi 300$	385	200	M180xP3.0	64	351	510	450	220	160	35	70	240	230	345	440	90	10	29	1 1/2
$\Phi 320$	410	220	M200xP3.0	69	377	540	490	240	180	35	75	250	240	360	460	95	10	29	1 1/2
$\Phi 350$	440	250	M220xP3.0	74	420	590	530	260	180	35	75	260	250	370	470	100	12	32	1 1/2
$\Phi 400$	490	300	M280xP3.0	79	480	630	570	320	180	35	75	270	260	380	480	110	14	32	1 1/2