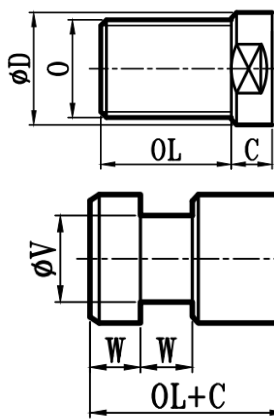


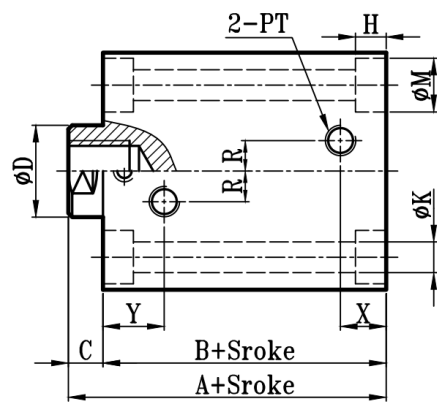
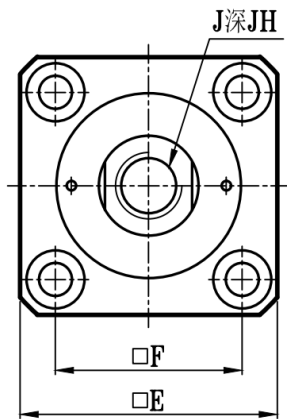
薄型单轴油压缸尺寸图 14Mpa Series Dimensional Features

E:外牙型

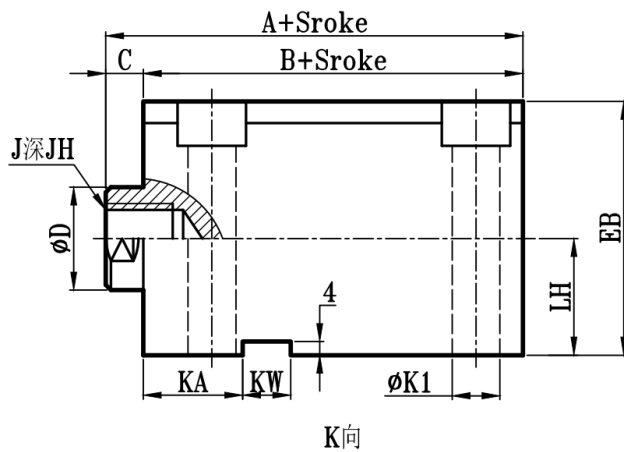
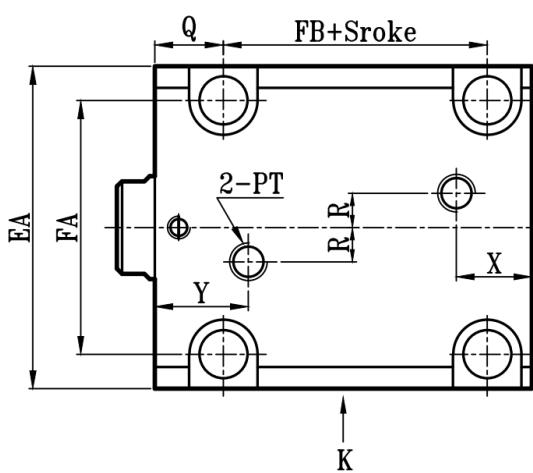


S/L/C共用

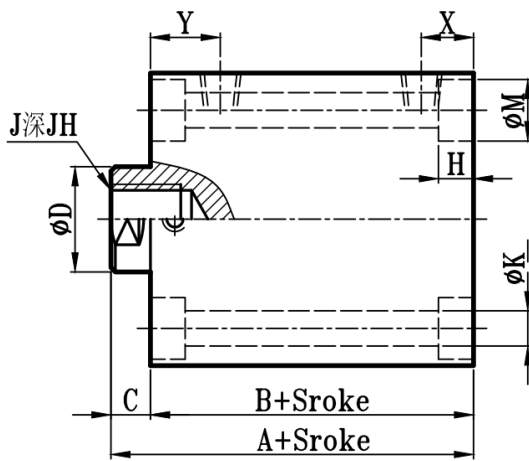
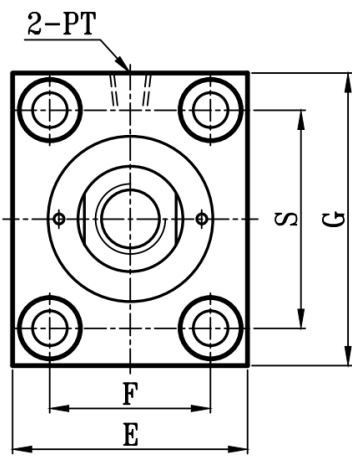
JOB:JOB+S(方型)+(内牙)



JOB:JOB+L(扁型)+(内牙)



JOB:JOB+C(长方型)+(内牙)



缸径 BORE	JOB																				I内牙型		E外牙型		H槽					
	A	B	C	ϕD	E	F	EA	FA	EB	LH	Q	FB	S	G	ϕK	$\phi K1$	KA	KW	ϕM	H	R	X	Y	PT	J	JH	O	OL	W	ϕV
$\phi 16$	49	41	8	10	40	26.5	44	33	36	16	20	13	38	56	6	6	25	8	9.5	6	0	7	19	1/8	M6xP1	15	M8xP1.25	15	8	5
$\phi 20$	52	44	8	12	45	30	50	38	41	18	20	15	42	60	6	7	25	8	9.5	6	0	7	20	1/8	M8xP1.25	15	M10xP1.25	15	10	7
$\phi 25$	53	45	8	14	50	36	55	43	46	21	20	17	50	67	6	7	26	8	9.5	6	5	7	20	1/8	M10xP1.5	15	M12xP1.25	20	10	9
$\phi 32$	64	54	10	20	62	47	70	56	56	25	20	24	60	78	7	9	28	12	11	7	10	10	25	1/4	M12xP1.75	20	M16xP1.5	25	15	14
$\phi 40$	65	55	10	25	70	52	80	62	64	29	20	23	66	84	9	11	28	12	14	9	10	10	25	1/4	M16xP2.0	20	M22xP1.5	30	15	18
$\phi 50$	71	60	11	30	80	58	94	74	74	34	20	27	76	98	11	13	29	14	17	11	10	11	27	1/4	M20xP2.5	25	M26xP1.5	35	15	23
$\phi 63$	80	67	13	35	94	69	114	90	89	42	20	32	92	117	14	16	31	16	20	13	10	13	30	3/8	M24xP3.0	30	M30xP1.5	40	15	27
$\phi 80$	95	78	17	40	114	86	134	110	109	52	20	41	112	140	16	16	34	16	23	15	15	15	32	3/8	M27xP3.0	35	M36xP1.5	45	20	32
$\phi 100$	99	82	17	50	134	102	160	134	129	62	20	44	132	164	18	18	34	16	26	17	15	15	34	3/8	M36xP4.0	40	M40xP2.0	50	20	40
$\phi 125$	115	95	20	60	164	124	195	163	158	76	30	44	162	202	22	22	44	20	32	21	20	17	39	1/2	M45xP4.5	45	M50xP2.0	55	20	50
$\phi 150$	121	101	20	80	194	146	230	192	186	89	30	47	187	235	26	26	46	20	38	25	20	19	41	1/2	M60xP5.5	45	M70xP2.0	60	25	70
$\phi 180$	134	109	25	100	224	171	270	228	216	104	30	53	217	270	29	29	49	20	42	28	20	21	45	1/2	M75xP6.0	50	M90xP2.0	65	25	85
$\phi 200$	144	119	25	120	246	188	300	252	237	114	30	60	237	295	32	32	51	20	47	31	20	23	47	1/2	M95xP6.0	50	M100xP3.0	70	25	100