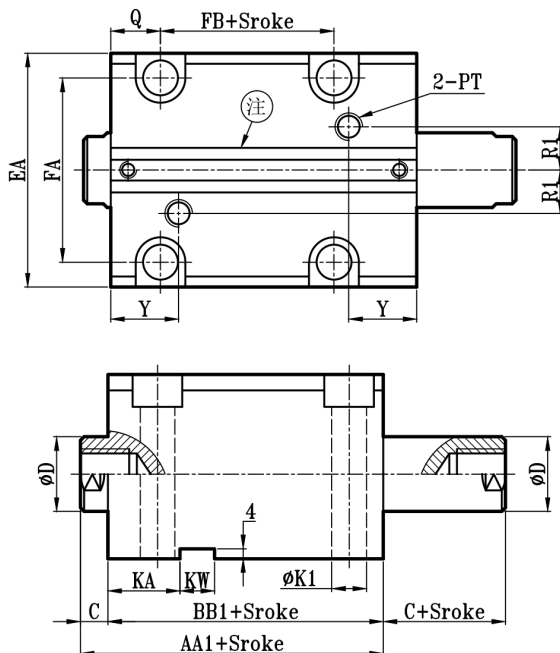
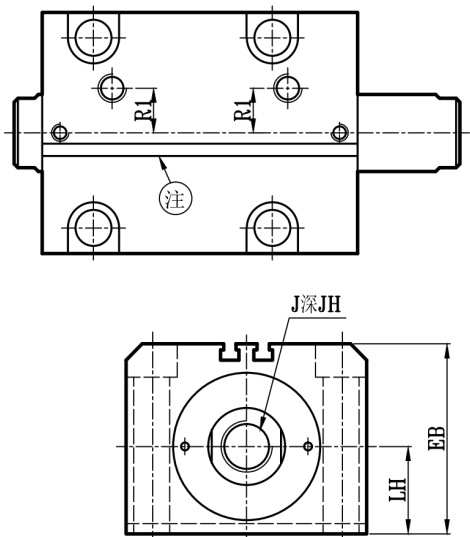
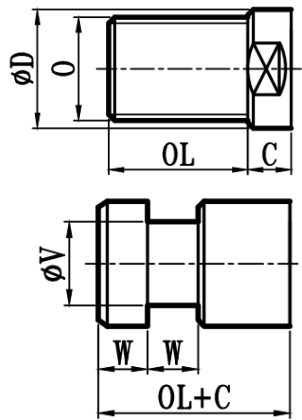


JOD:JOD+L(扁型)+M(磁石)

薄型双轴(可调)感应油压缸尺寸图 14Mpa Series Dimensional Features

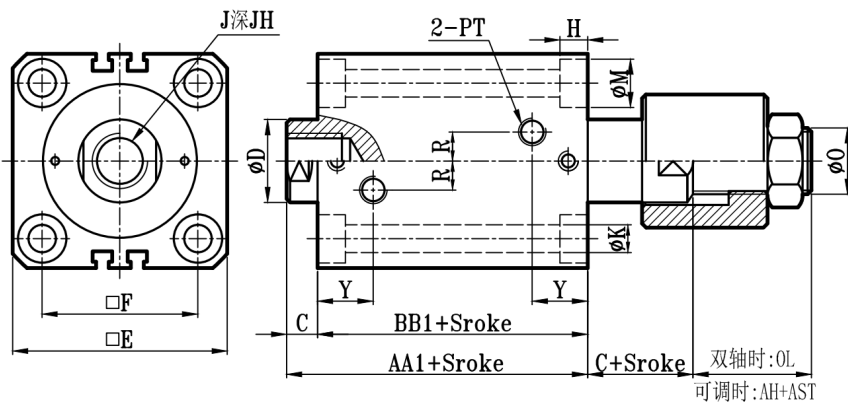


注: $\Phi 50$ 缸径(含 $\Phi 50$ 缸径)以下为一条感应开关槽



S/L/C共用

JOD:JOD+(可调)+S(方型)+M(磁石)



双轴时:OL
可调时:AH+AST

缸径 BORE	JOD-M																			I(内牙型)		E(外牙型)		H槽					
	AA1	BB1	C	ΦD	EA	FA	EB	LH	Q	FB	$\Phi K1$	KA	R1	KW	E	F	ΦK	ΦM	H	R	Y	PT	AH	J	JH	O	OL	W	ΦV
$\Phi 16$	63.5	55.5	8	10	44	33	36	16	20	13	6	25	5	8	40	26.5	6	9.5	6	0	19	1/8	18	M6xP1	15	M8xP1.25	15	8	5
$\Phi 20$	75	67	8	12	50	38	41	18	20	15	7	25	5	8	45	30	6	9.5	6	0	20	1/8	22	M8xP1.25	15	M10xP1.25	15	10	7
$\Phi 25$	76.5	68.5	8	14	55	43	46	21	20	17	7	26	5	8	50	36	6	9.5	6	5	21	1/8	22	M10xP1.5	15	M12xP1.25	20	10	9
$\Phi 32$	88.5	78.5	10	20	70	56	56	25	20	24	9	28	10	12	62	47	7	11	7	10	25	1/4	29	M12xP1.75	20	M16xP1.5	25	15	14
$\Phi 40$	89	79	10	25	80	62	64	29	20	23	11	28	10	12	70	52	9	14	9	10	25	1/4	32	M16xP2.0	20	M22xP1.5	30	15	18
$\Phi 50$	96	85	11	30	94	74	74	34	20	27	13	29	10	14	80	58	11	17	11	10	27	1/4	39	M20xP2.5	25	M26xP1.5	35	15	23
$\Phi 63$	105	92	13	35	114	90	89	42	20	32	16	31	21	16	94	69	14	20	13	10	30	3/8	40	M24xP3.0	30	M30xP1.5	40	15	27
$\Phi 80$	119	102	17	40	134	110	109	52	20	41	16	34	25	16	114	86	16	23	15	15	32	3/8	48	M27xP3.0	35	M36xP1.5	45	20	32
$\Phi 100$	124	107	17	50	160	134	129	62	20	44	18	34	25	16	134	102	18	26	17	15	34	3/8	50	M36xP4.0	40	M40xP2.0	50	20	40
$\Phi 125$	140	120	20	60	195	163	158	76	30	44	22	44	30	20	164	124	22	32	21	20	39	1/2	60	M45xP4.5	45	M50xP2.0	55	20	50
$\Phi 150$	149	129	20	80	230	192	186	89	30	47	26	46	30	20	194	146	26	38	25	20	42	1/2	60	M60xP5.5	45	M70xP2.0	60	25	70
$\Phi 180$	168	143	25	100	270	228	216	104	30	53	29	49	30	20	224	171	29	42	28	20	45	1/2	65	M75xP6.0	50	M90xP2.0	65	25	85
$\Phi 200$	174	149	25	120	300	252	237	114	30	60	32	51	30	20	246	188	32	47	31	20	47	1/2	75	M95xP6.0	50	M100xP3.0	70	25	100

备注:AST为客户指定之可调行程