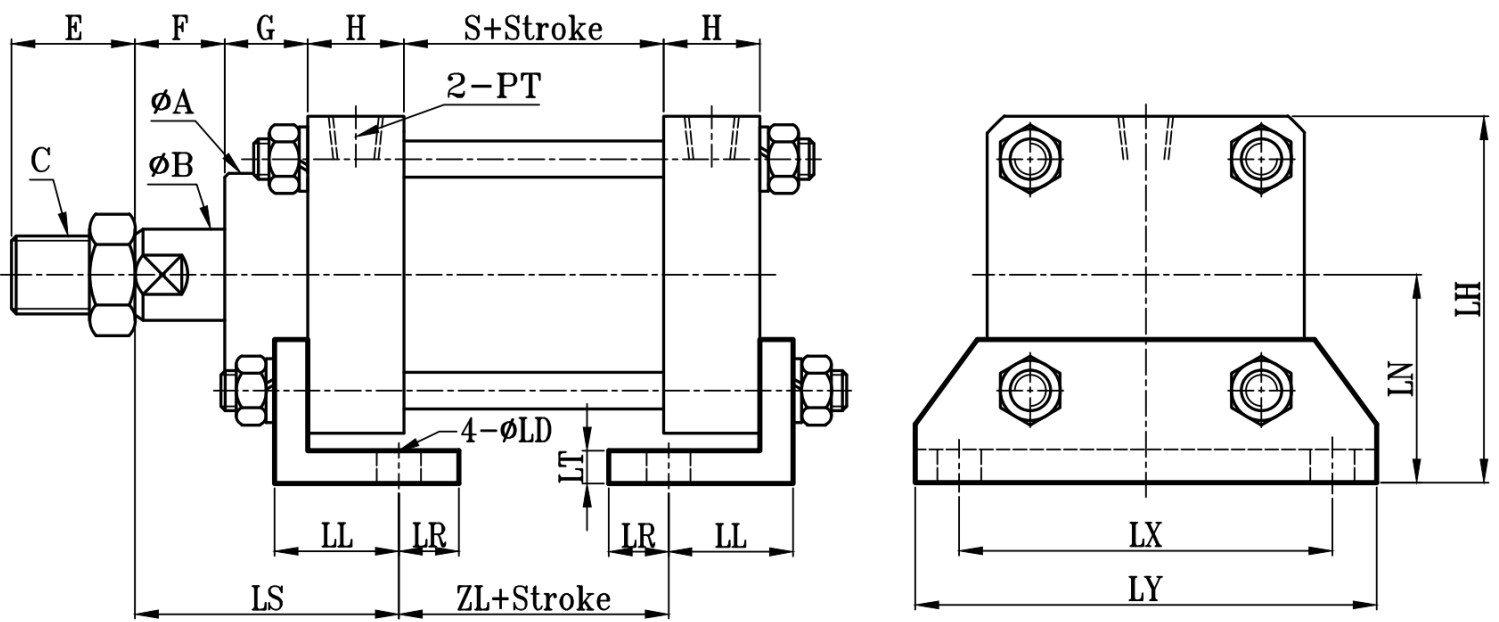
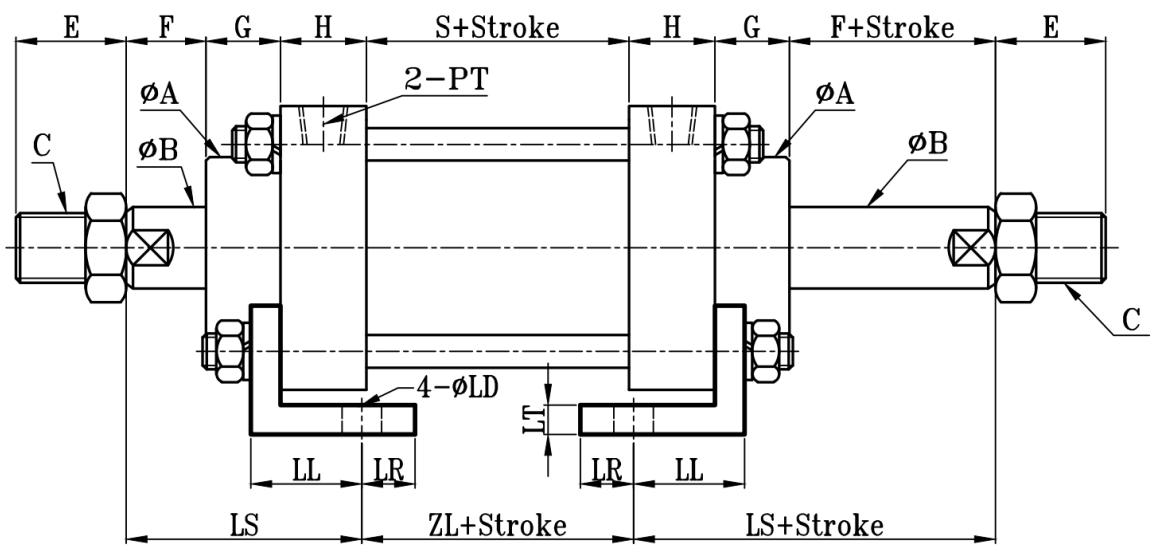


MOB:MOB+LAA(架) TYPE

方型轻油油压缸LAA架尺寸图 7Mpa Hydraulic Cylinders LAA Dimensional Features



MOD:MOD+LAA(架) TYPE



缸径 BORE	MOB-MOD												LAA TYPE								
	ΦA	ΦB	C	E	F	G	H	PT	S	LS	ZL	ΦLD	LH	LN	LL	LR	LT	LX	LY		
$\Phi 16$	21	10	M8xP1.25	20	11	15	20	1/8	45	42	53	7	46.5	29	20	12	4	48	64		
$\Phi 20$	25	12	M10xP1.25	25	11	15	20	1/8	45	42	53	7	51.5	31.5	20	12	4	53	69		
$\Phi 25$	25	14	M12xP1.25	25	11	15	20	1/8	45	42	53	7	51.5	31.5	20	12	4	53	69		
$\Phi 32$	30	16	M14xP1.5	30	15	15	25	1/4	50	50	60	9	61.5	36.5	25	15	5	66	88		
$\Phi 40$	40	20	M16xP1.5	30	15	20	25	3/8	50	55	60	9	73.5	43.5	25	15	5	80	102		
$\Phi 50$	45	20	M16xP1.5	30	15	20	30	3/8	55	61	63	11	83	48	32	18	6	90	116		
$\Phi 63$	55	25	M22xP1.5	35	20	25	30	3/8	55	71	63	11	97.5	55	32	18	6	105	131		
$\Phi 80$	62	30	M26xP1.5	40	20	30	35	1/2	60	82	66	13	120.5	69	40	23	8	130	162		
$\Phi 100$	75	35	M30xP1.5	40	20	30	35	1/2	75	82	81	15	139	77.5	40	23	8	150	186		
$\Phi 125$	85	50	M40xP2.0	50	25	30	40	1/2	75	95	75	17	164.5	92	50	30	10	177	215		
$\Phi 150$	105	60	M50xP2.0	60	30	30	50	3/4	85	100	105	20	203.5	112.5	50	30	10	218	262		
$\Phi 160$	105	60	M50xP2.0	60	30	30	50	3/4	85	100	105	20	203.5	112.5	50	30	10	218	262		
$\Phi 180$	130	80	M70xP2.0	80	30	35	50	3/4	95	118	89	24	248	136.5	65	35	12	275	325		
$\Phi 200$	130	80	M70xP2.0	80	30	35	50	3/4	95	118	89	24	248	136.5	65	35	12	275	325		