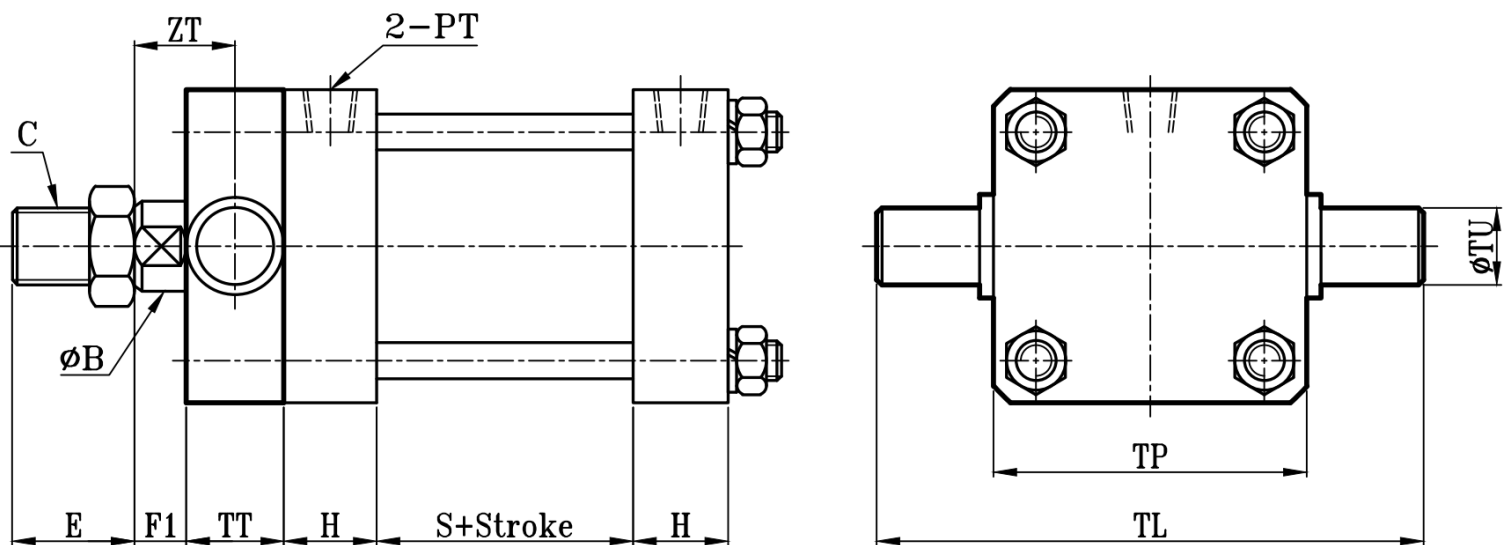
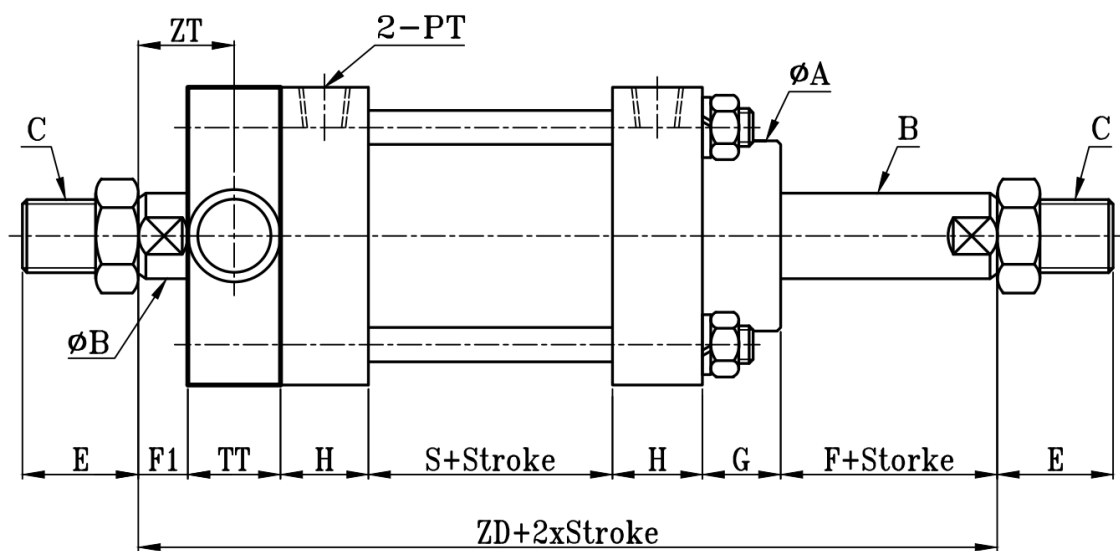


MOB:MOB+TA TYPE

方型轻油压缸TA板尺寸图 7Mpa Hydraulic Cylinders TA Dimensional Features



MOD:MOD+TA TYPE



缸径 BORE	MOB-MOD												TA TYPE			
	ϕA	ϕB	C	E	F	F1	G	H	PT	S	ZT	ZD	TL	TP	TT	ϕTU
$\Phi 16$	21	10	M8xP1.25	20	11	12	15	20	1/8	45	19	137	67	43	14	12
$\Phi 20$	25	12	M10xP1.25	25	11	12	15	20	1/8	45	19	137	72	48	14	12
$\Phi 25$	25	14	M12xP1.25	25	11	12	15	20	1/8	45	19	137	72	48	14	12
$\Phi 32$	30	16	M14xP1.5	30	15	12	15	25	1/4	50	21	160	90	60	18	16
$\Phi 40$	40	20	M16xP1.5	30	15	13	20	25	3/8	50	24	170	110	70	22	20
$\Phi 50$	45	20	M16xP1.5	30	15	8	20	30	3/8	55	21.5	185	130	80	27	25
$\Phi 63$	55	25	M22xP1.5	35	20	13	25	30	3/8	55	29	205	155	95	32	30
$\Phi 80$	62	30	M26xP1.5	40	20	13	30	35	1/2	60	31.5	230	183	113	37	35
$\Phi 100$	75	35	M30xP1.5	40	20	8	30	35	1/2	75	29	245	213	133	42	40
$\Phi 125$	85	50	M40xP2.0	50	25	8	30	40	1/2	75	31.5	265	260	160	47	45
$\Phi 150$	105	60	M50xP2.0	60	30	8	30	50	3/4	85	34	305	317	197	52	50
$\Phi 160$	105	60	M50xP2.0	60	30	8	30	50	3/4	85	34	305	317	197	52	50
$\Phi 180$	130	80	M70xP2.0	80	30	8	35	50	3/4	95	36.5	325	388	238	57	55
$\Phi 200$	130	80	M70xP2.0	80	30	8	35	50	3/4	95	36.5	325	388	238	57	55