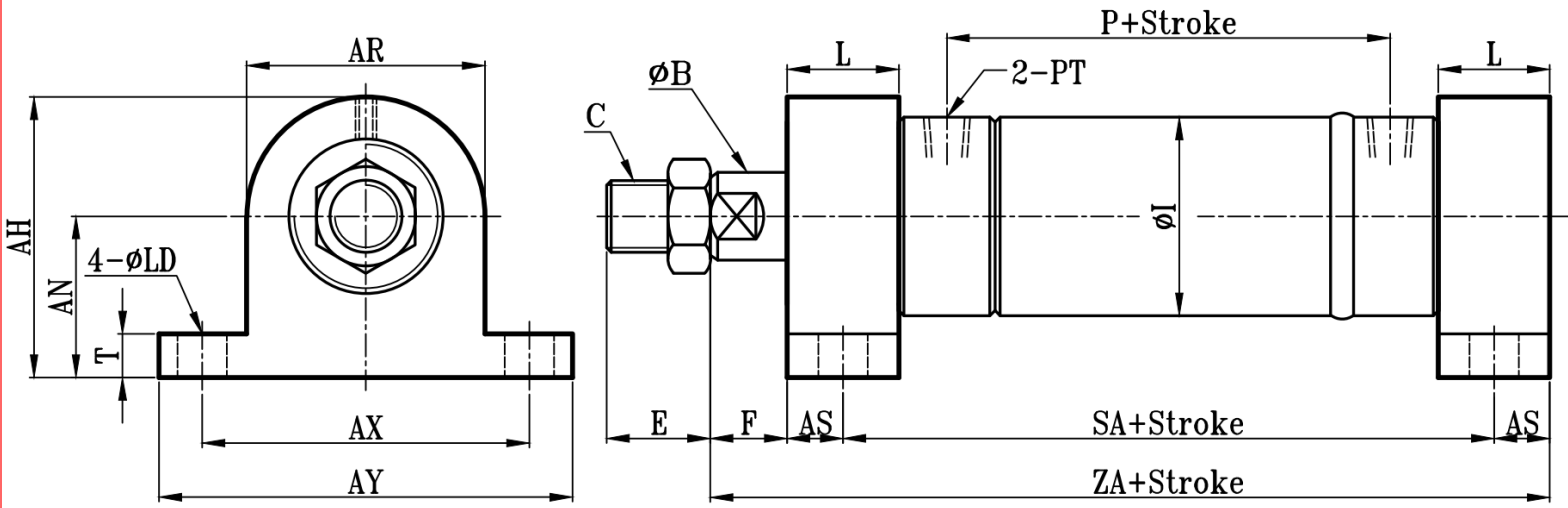
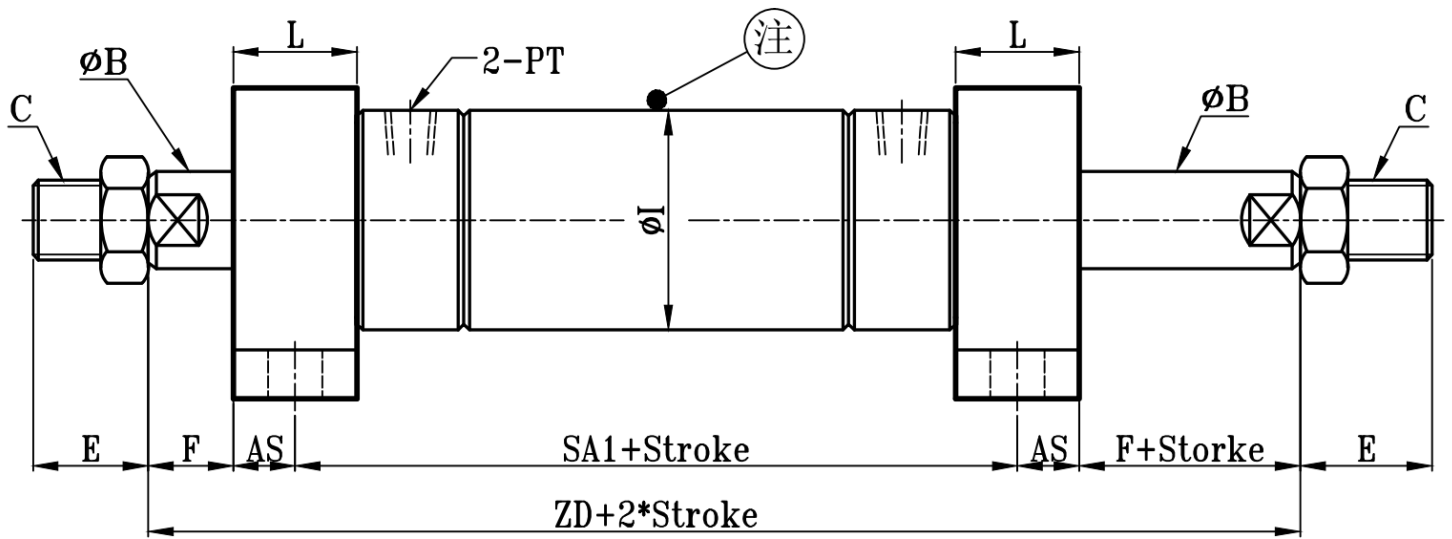


ROB:ROB+LA(座) TYPE

圆型中型油压缸LA座板尺寸图 14Mpa R0 Series LB Dimensional Features



ROD:ROD+LA(座) TYPE



注:感应油缸时,不论是单轴还是双轴缸,缸筒长度的选择均为双轴缸的缸筒长度

缸径 BORE	ROB-ROD TYPE											LA (脚座型) TYPE								
	φB	C	E	F	P	φI	PT	SA	SA1	Z	ZD	φLD	T	L	AH	AY	AN	AX	AS	AR
φ32	16	M14xP1.5	30	15	81	42	1/4	135	155	175	210	9	14	25	54	95	29	75	12.5	50
φ40	20	M16xP1.5	30	15	84	50	3/8	135	155	175	210	12	14	25	69	115	36.5	95	12.5	65
φ50	25	M22xP1.5	40	20	95	60	3/8	161	185	211	255	14	19	30	84	140	44	115	15	80
φ63	35	M30xP1.5	40	20	95	73	3/8	161	185	211	255	16	19	30	95	160	50	130	15	90
φ80	40	M30xP1.5	45	25	113	92	1/2	188	215	248	300	18	24	35	115	185	60	155	17.5	110
φ100	50	M40xP2.0	50	25	123	114	1/2	198	225	258	310	20	24	35	135	215	70	180	17.5	130
φ125	60	M50xP2.0	60	30	136	140	3/4	218	250	288	350	24	29	40	168	265	87	220	20	162
φ140	70	M60xP2.0	70	30	136	160	3/4	218	250	288	350	24	29	40	186	290	96	240	20	180
φ150	80	M70xP2.0	80	30	151	168	3/4	248	285	323	390	29	34	45	201	315	103.5	260	22.5	195
φ160	80	M70xP2.0	80	30	151	178	3/4	248	285	323	390	29	34	45	211	325	108.5	270	22.5	205
φ180	100	M90xP2.0	100	35	177	200	1	280	320	365	440	32	39	50	242	370	124.5	310	25	235
φ200	100	M90xP2.0	100	35	177	228	1	280	320	365	440	35	44	50	267	105	137	340	25	260
φ220	125	M100xP3.0	110	35	203	250	1 1/4	312	355	402	480	38	49	55	292	440	149.5	370	27.5	285
φ250	125	M100xP3.0	110	35	203	276	1 1/4	312	355	402	480	41	54	55	322	480	164.5	405	27.5	315