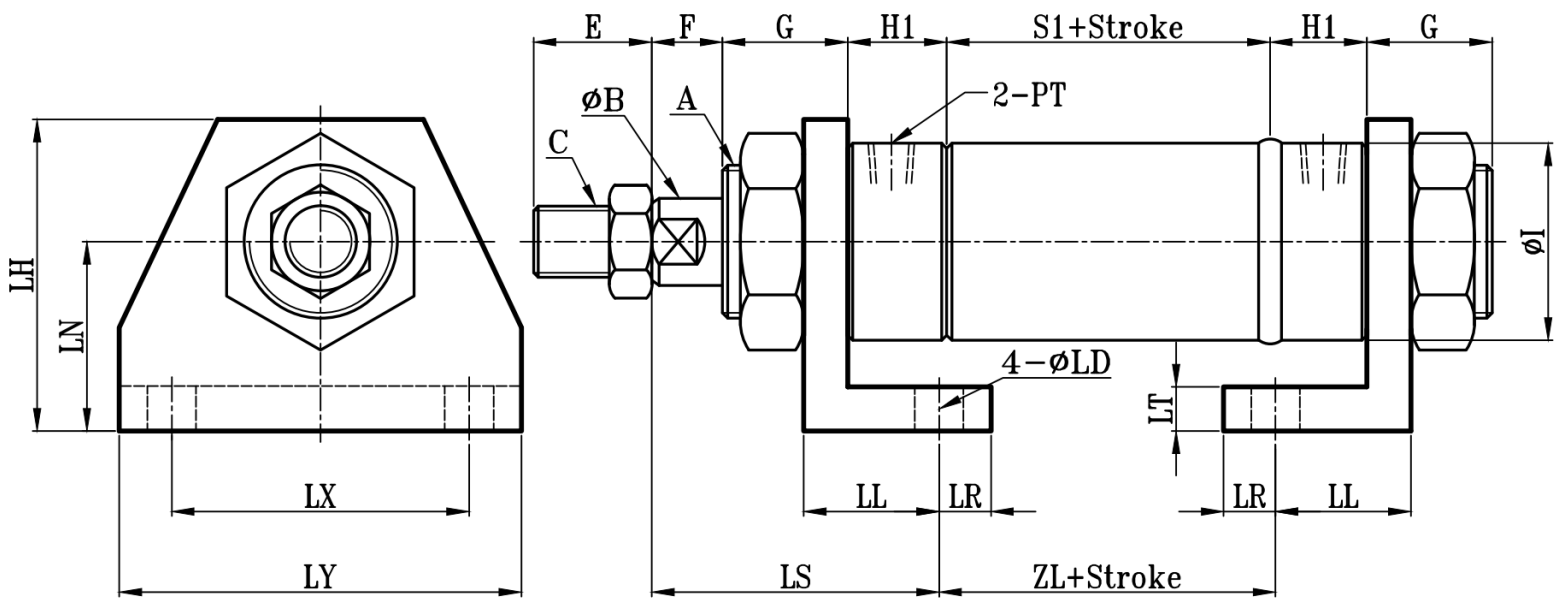
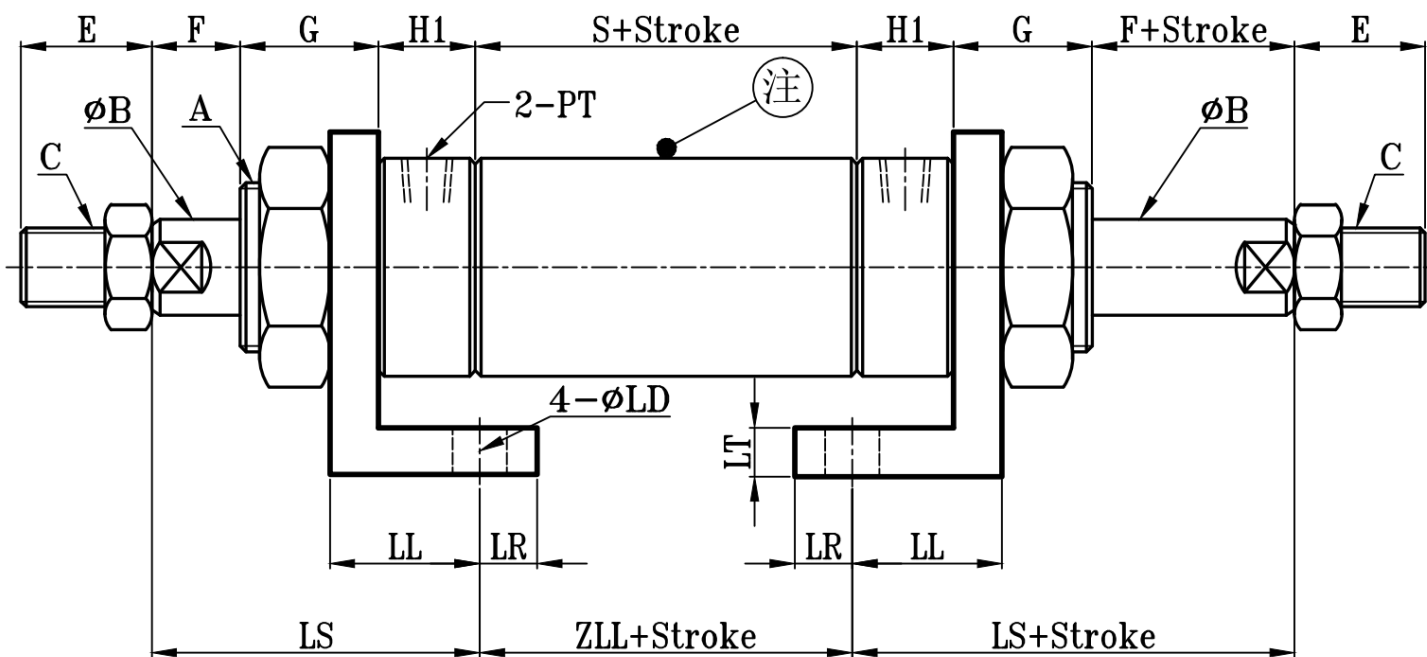


ROB:ROB+LAA(架) TYPE

圆型中型油压缸LAA架尺寸图 14Mpa R0 Series LAA Dimensional Features



ROD:ROD+LAA(架) TYPE



注:感应油缸时,不论是单轴还是双轴缸,缸筒长度的选择均为双轴缸的缸筒长度

缸径 BORE	ROB-ROD TYPE														LAA(脚座型) TYPE							
	A	ΦB	C	E	F	G	H1	ΦI	PT	S1	S	LS	ZL	ZLL	ΦLD	LH	LN	LL	LR	LT	LX	LY
Φ32	M30xP1.5	16	M14xP1.5	30	15	25	25	42	1/4	60	80	66	58	78	10	63	40	34	16	8	58	80
Φ40	M40xP2.0	20	M16xP1.5	30	15	25	25	50	3/8	60	80	67	56	76	12	80	48	37	18	10	70	96
Φ50	M50xP2.0	25	M22xP1.5	40	20	30	30	60	3/8	71	95	80	70	95	14	80	48	40	20	10	84	114
Φ63	M60xP2.0	35	M30xP1.5	40	20	30	30	73	3/8	71	95	84	62	87	16	100	60	46	24	12	101	135
Φ80	M70xP2.0	40	M30xP1.5	45	25	35	35	92	1/2	83	110	96	81	108	18	125	75	50	25	14	123	160
Φ100	M90xP2.0	50	M40xP2.0	50	25	35	35	114	1/2	93	120	100	83	110	20	150	85	56	29	16	150	192
Φ125	M120xP2.5	60	M50xP2.0	60	30	40	40	140	3/4	98	130	115	88	120	24	185	105	63	32	18	185	233
Φ140	M140xP2.5	70	M60xP2.0	70	30	40	40	160	3/4	98	130	115	88	120	26	220	120	65	35	20	214	274
Φ150	M150xP3.0	80	M70xP2.0	80	30	45	45	168	3/4	113	150	123	107	144	29	230	130	68	37	20	224	284
Φ160	M160xP3.0	80	M70xP2.0	80	30	45	45	178	3/4	113	150	128	97	134	29	245	140	73	39	20	255	320
Φ180	M180xP3.0	100	M90xP2.0	100	35	50	50	200	1	130	170	139	122	162	32	265	150	78	42	24	265	330
Φ200	M200xP3.0	100	M90xP2.0	100	35	50	50	228	1	130	170	141	118	158	35	285	160	80	45	24	293	364
Φ220	M220xP3.0	125	M100xP3.0	110	35	55	55	250	1 1/4	147	190	149	139	182	38	305	170	85	48	26	318	394
Φ250	M250xP3.0	125	M100xP3.0	110	35	55	55	276	1 1/4	147	190	154	129	172	41	330	180	90	52	26	343	425