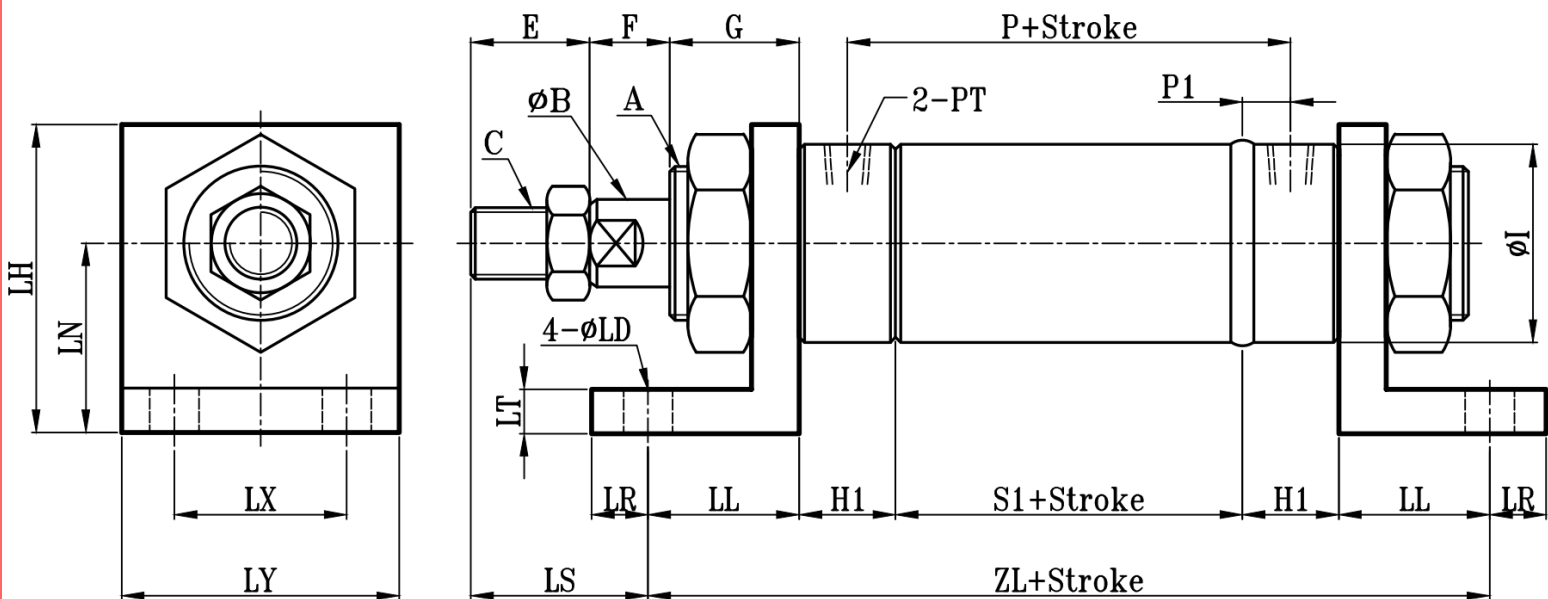
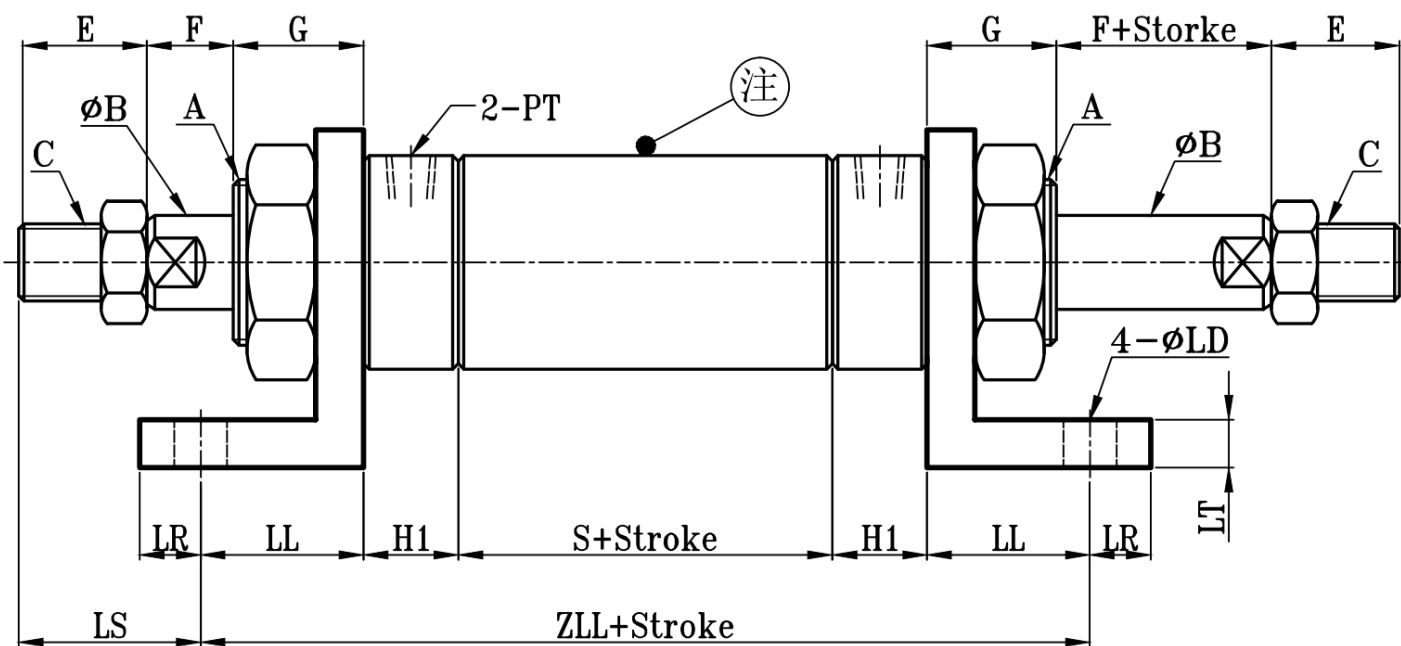


ROB:ROB+LB(架) TYPE

圓型中型油壓缸LB架尺寸圖 14Mpa R0 Series LB Dimensional Features



ROD:ROD+LB(架) TYPE



注:感应油缸时,不论是单轴还是双轴缸,缸筒长度的选择均为双轴缸的缸筒长度

缸径 BORE	ROB-ROD TYPE														LB(脚座型) TYPE									
	A	$\Phi B$	C	E	F	G	H1	$\Phi I$	P	P1	PT	S1	S	LS	ZL	ZLL	$\Phi LD$	LT	LH	LN	LL	LR	LX	LY
$\Phi 32$	M30xP1.5	16	M14xP1.5	30	15	25	25	42	81	10.5	1/4	60	80	33	184	204	10	8	63	40	37	13	42	65
$\Phi 40$	M40xP2.0	20	M16xP1.5	30	15	25	25	50	84	12	3/8	60	80	30	190	210	12	10	80	48	40	15	50	75
$\Phi 50$	M50xP2.0	25	M22xP1.5	40	20	30	30	60	95	12	3/8	71	95	47	217	241	14	10	80	48	43	17	55	85
$\Phi 63$	M60xP2.0	35	M30xP1.5	40	20	30	30	73	95	12	3/8	71	95	39	233	257	16	12	100	60	51	19	65	100
$\Phi 80$	M70xP2.0	40	M30xP1.5	45	25	35	35	92	113	15	1/2	83	110	51	261	288	18	14	125	75	54	21	80	120
$\Phi 100$	M90xP2.0	50	M40xP2.0	50	25	35	35	114	123	15	1/2	93	120	48	287	314	20	16	150	85	62	23	95	140
$\Phi 125$	M120xP2.5	60	M50xP2.0	60	30	40	40	140	136	19	3/4	98	130	62	314	346	24	18	185	105	68	27	120	170
$\Phi 140$	M140xP2.5	70	M60xP2.0	70	30	40	40	160	136	19	3/4	98	130	67	324	356	26	20	220	120	73	29	140	190
$\Phi 150$	M150xP3.0	80	M70xP2.0	80	30	45	45	168	151	19	3/4	113	150	82	349	386	29	20	230	130	73	32	150	200
$\Phi 160$	M160xP3.0	80	M70xP2.0	80	30	45	45	178	151	19	3/4	113	150	77	359	396	29	20	240	140	78	34	160	210
$\Phi 180$	M180xP3.0	100	M90xP2.0	100	35	50	50	200	177	23.5	1	130	170	101	398	438	32	24	265	150	86	36	170	240
$\Phi 200$	M200xP3.0	100	M90xP2.0	100	35	50	50	228	177	23.5	1	130	170	99	402	442	35	24	285	160	89	39	195	270
$\Phi 220$	M220xP3.0	125	M100xP3.0	110	35	55	55	250	203	28	1 1/4	147	190	105	447	490	38	26	305	170	95	42	220	300
$\Phi 250$	M250xP3.0	125	M100xP3.0	110	35	55	55	276	203	28	1 1/4	147	190	100	457	500	41	26	330	180	100	45	250	330